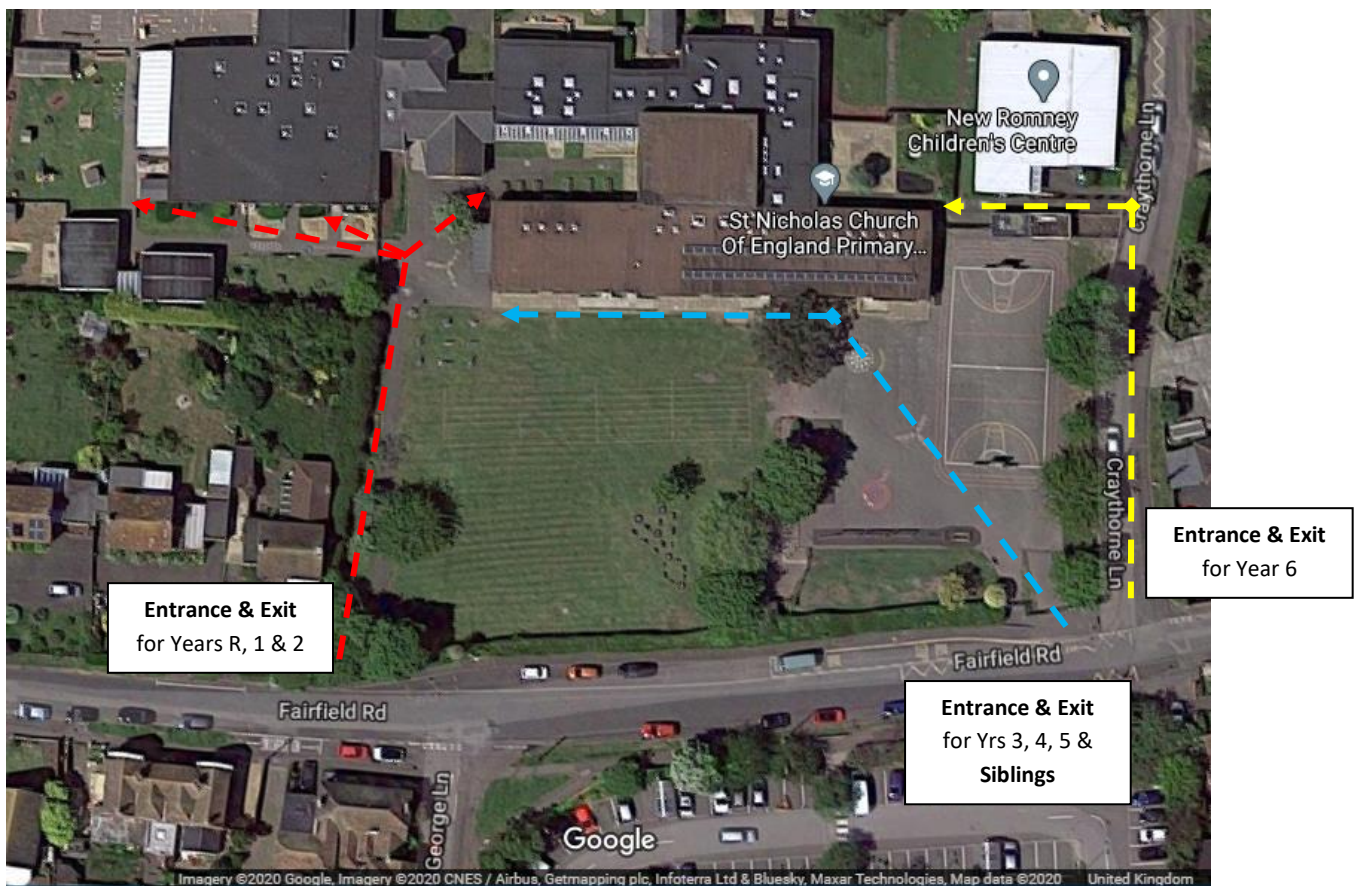


## Whole school reopening March 2021 - drop off & collection guidance.

From **Monday 8<sup>th</sup> March** we will no longer operate a staggered start/ finish time. However, we will continue to use all 3 gates to minimise congestion (Please note the changes below).

- In the morning the gates will be open from **8:30am – 8:45am** and in the afternoon at **3.00pm**. Please drop off and collect your child promptly.
- Only 1 adult (parent, carer, child minder) will be allowed on site to drop off or collect.
- Adults, must wear a face mask while on the school site, unless they have a valid reason not to do so.

Each Year group will have a specific entrance and exit point (see below.) **It is essential that all children arrive and leave at their designated entry / exit point to reduce congestion and maintain social distancing.** If you have more than one child in the school, please use the 'Sibling Entrance' to drop off and pick up your children.



Do not worry; staff will be present on the gate to help guide you and the children. **Parents are requested not to hang around at drop off or congregate on the pavements outside the school gates, at either end of the school day.** Parents will be able to enter the school grounds during pick up.

- If you have a child in **Year 3, 4 or 5** please use the main gate entrance, located on Fairfield Road. This is represented by the **blue** arrow.
- If you have a child in **Year R, 1 or 2**, please use the side gate entrance, located on Fairfield Road opposite George Lane. This is represented by the **red** arrow.
- If you have a child in **Year 6**, please use the side gate, located on Craythorne Lane, next to the Children's Centre. This is represented by the **yellow** arrow.
- If you have more than one child in our school, please use the 'Sibling Entrance' to drop off and pick up your children. This is represented by the **blue** arrow.

# Whole school reopening March 2021 - drop off & collection guidance.



## Accompanying your child at Drop off

We request that only **ONE** parent accompany children at the drop off / pick up. Children must be accompanied by a responsible adult. We would request that parents of pupils in Year 5 and 6 inform the class teacher via Class Dojo if their child is expected to walk home unaccompanied. It is the parent's responsibility to reinforce expectations of social distancing when walking home.

## Pick up arrangements

Each pod will have a specific exit point. This is the same point as used for the drop off in the morning. Parents will be allowed on site when collecting the children. We have a system in place, coordinated by staff, to safely collect your child/children at the end of the day. For this to work we would request that parents do not congregate on the pathways but observe social distancing in the larger spaced areas;

- Year 1 stand away from class doors in the outside area
- Year 2 wait by the parent shelter and stand where the class teachers can see you.
- Years 3 – 5 please stand on the field or playground and keep the path clear for children

Do not worry, it may all seem unusual and confusing now but it will all make sense. It is important to note that organising the drop off and pick up arrangements this way may take longer than usual. Please be patient. We do it like this to make sure that we keep everyone as safe as possible. We ask that parents observe social distancing when on the school site and do not congregate outside the school. Please remember, we are the role models for our children.

## Secondary school aged pupils

Further to the guidance above we would like to draw attention to this additional detail;

- Secondary aged pupils are not allowed on the school site unless they are collecting a younger sibling.
- Only one secondary aged pupil is allowed on site to collect a sibling, please remind those collecting not to put us in a difficult situation by coming onto the school site with their friends. They will be asked to leave.
- Secondary aged pupils should wait outside the school while parents collect younger children.

## Equipment & Resources

It is still recommended that pupils limit the amount of equipment they bring into school each day, to essentials - such as water bottles, lunch boxes, coats, books, stationery and in Y6 only -mobile phones. Small bags are allowed. As before we would be grateful if children from Y1-6 bring in their own PVC clear pencil case and equipment to school so we can reduce the risk in sharing resources.

Your help and support are greatly appreciated in making sure we continue to keep a safe and secure environment for everyone in our community by supporting the measures detailed above.