

## 4/2/2021 (Thursday) - L.I. Can I read and interpret line graphs?

<https://whiterosemaths.com/homelearning/year-5/week-6-statistics/> - Read and interpret line graphs.

1. Here is a line graph showing the temperature in a garden.

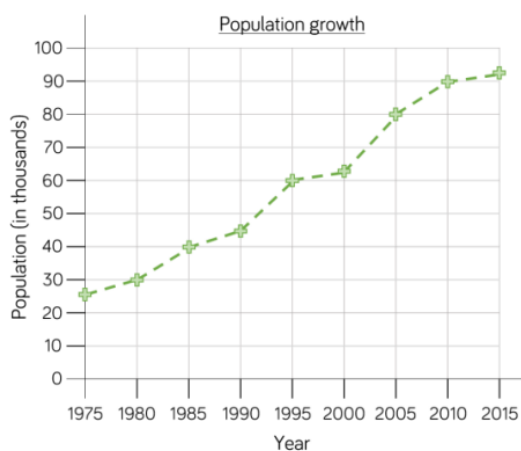
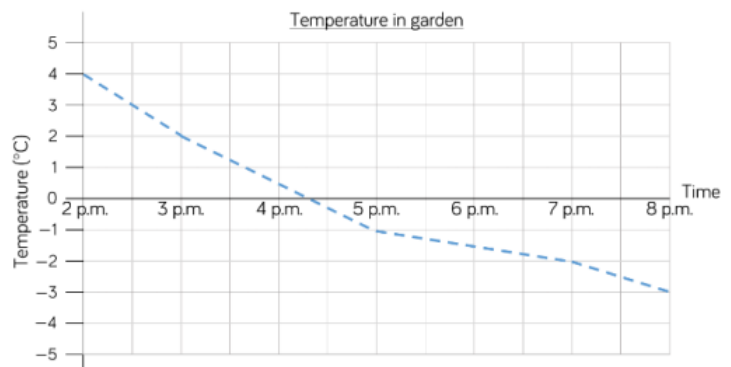
What was the temperature at 5pm?  $-\text{ }^{\circ}\text{C}$ .

What was the difference in temperature between 3pm and 7pm?  $-\text{ }^{\circ}\text{C}$ .

When was the temperature  $4^{\circ}\text{C}$ ?  $-\text{ }^{\circ}\text{C}$ .

Estimate the time when the temperature was  $0^{\circ}\text{C}$ .  $-\text{ }^{\circ}\text{C}$ .

Estimate the temperature at 6pm.  $-\text{ }^{\circ}\text{C}$ .



2. This line graph shows the population growth of a town.

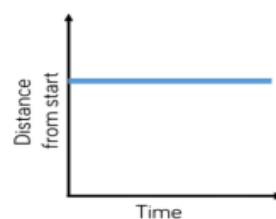
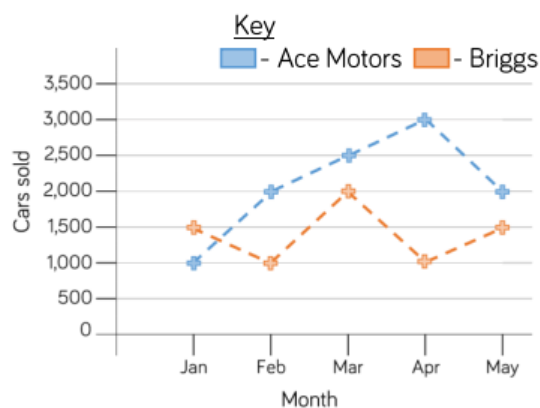
What was the population in 1985?  $-\text{ }^{\circ}\text{C}$ .

How much did the population grow between 1990 and 2010?  $-\text{ }^{\circ}\text{C}$ .

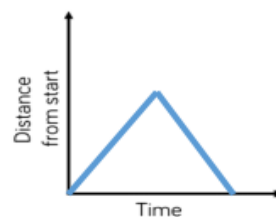
When was the population double the population of 1985?  $-\text{ }^{\circ}\text{C}$ .

4. Match the graph to the activity.

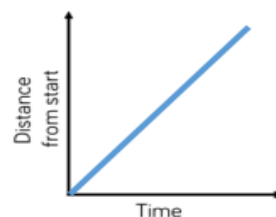
3. The graph shows the number of cars sold by 2 different companies.



A car travels at constant speed on the motorway.



A car is parked outside a house.



A car drives to the end of the road and back.

How many more cars did Ace Motors sell than Briggs in April?  $-\text{ }^{\circ}\text{C}$ .

From January to March how many cars did each company sell?  $-\text{ }^{\circ}\text{C}$ .

Crookes Motors sold 250 more cars than Briggs each month. Plot Crookes Motors' sales on the graph.