

## What's the sound?

Some sounds are written down as two letters. For example:

/ar/ is written as **ar** in these words: **car**, **jar**, **star**.

/or/ is written **or** in these words: **storm**, **cork**, **for**.

Complete these  
**ar** words.



\_\_\_\_\_k

p\_\_\_\_\_k

\_\_\_\_\_m

st\_\_\_\_\_t



c\_\_\_\_\_d

sh\_\_\_\_\_k



g\_\_\_\_\_den

p\_\_\_\_\_ty

Complete these  
**or** words.

h\_\_\_\_\_se

b\_\_\_\_\_n

h\_\_\_\_\_n

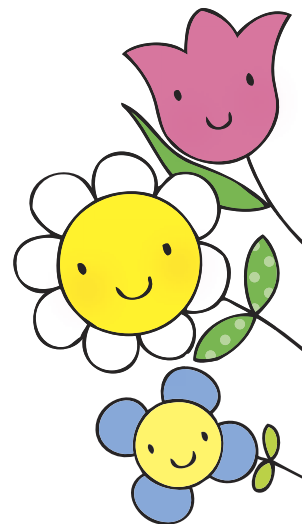
st\_\_\_\_\_e

l\_\_\_\_\_d

s\_\_\_\_\_t

m\_\_\_\_\_ning

f\_\_\_\_\_k



Read aloud the words that you have made.

## See a leaf

The spelling **ee** makes a long /**ee**/ sound.

For example: **see** and **free**

The letters **ea** and **ie** also make the long /**ee**/ sound in some words.

For example: **leaf** and **brief**.

Read the words. Circle the words that have a long /**ee**/ sound.

need    peas

field    tie    seal

net    chief    wheel    peel

easy    pet    tea    pin    team

piece    deep

