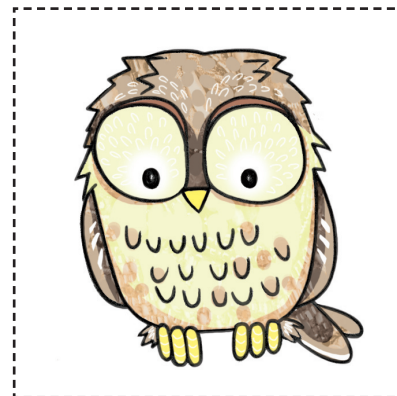
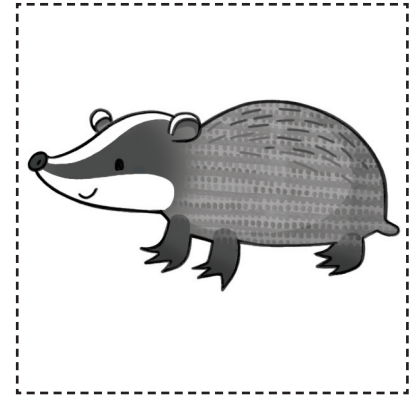
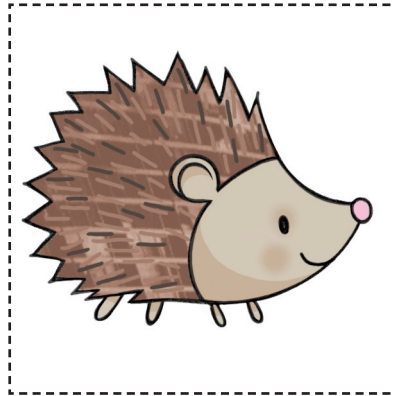
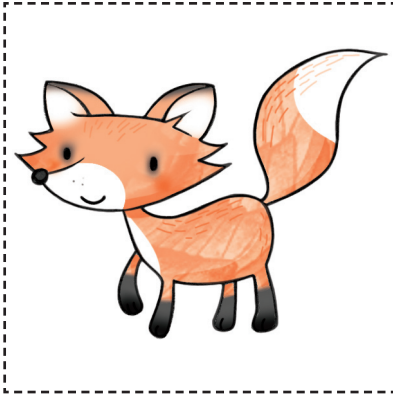


# Animal facts

Access over 9000 ready-made resources for just £20 per year

Subscribe today at [scholastic.co.uk/subscribe](http://scholastic.co.uk/subscribe)

**Cut out the animals and facts below. Can you match the animals to the correct fact?**



I am a black and white nocturnal animal. I eat worms and small mammals. I live in a sett.

I am a small, brown mammal with a long tail. I eat berries and nuts, and hibernate in winter.

I have a long, fluffy tail and four legs. I have sharp teeth and hunt other animals for food.

I am a small, prickly animal. I live in the hedgerows. I roll into a ball when I'm scared.

I live in the woods at the top of a tree. I have a sharp beak and talons. I hunt at night.